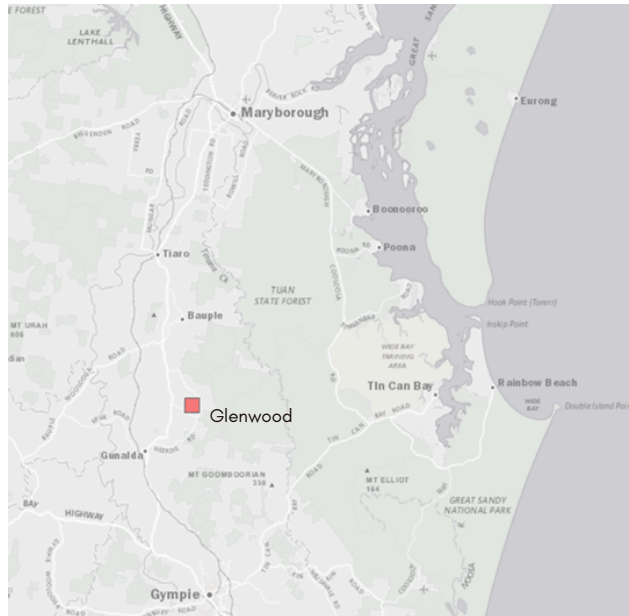


Many Australian plants are pollinated by Honeyeaters, making them essential to backyards and the bush.

### **Habitat**

*Eucalypt forests, Mangroves, heath, understorey near Wetlands and Woodlands*



© QLD Government



# Honeyeaters

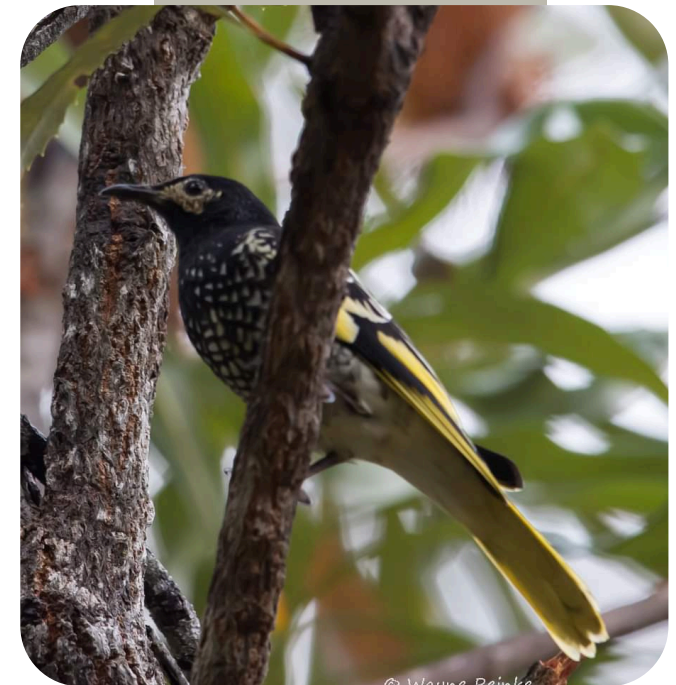
*A Pocket Guide of Honeyeaters found in Glenwood and surrounding area including Forestry.*



Glenwild brochures are a list of all wildlife species known to live or visit Glenwood and surrounding areas including Forestry. Information provided is a general overview of habitat, food, and breeding seasons. All photographs were taken by local wildlife watchers and kindly shared. Photographs were the best available at the time 2023/2025 Contributors have adhered to Birdlife Australia's "Ethical Birding Guidelines" (2012)

### Acknowledgement

Wayne Reinke, Adrian Moore, Marsden Allan  
© Glenwild 2024



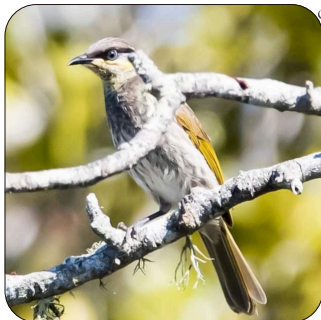
*Regent Honeyeater Endangered*  
*Anthochaera phrygia*  
20-23cm



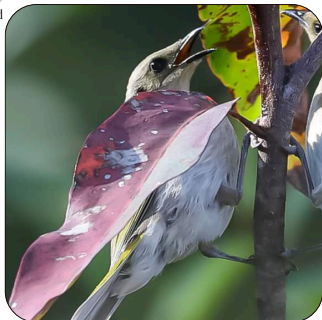
Brown Honeyeater  
*Lichmera indistincta*  
10-15cm



White-cheeked Honeyeater  
*Phylidonyris niger*  
B: nectar availability



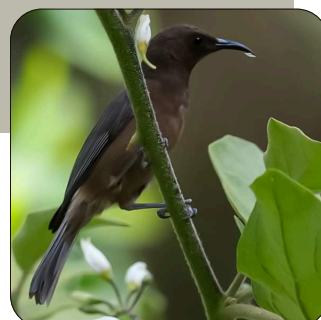
Mangrove Honeyeater  
*Gavicalis fasciogularis*  
15-25cm



Fuscous Honeyeater  
*Ptilotula fusca*  
12-20cm



Yellow-tufted Honeyeater  
*Lichenostomus melanops*  
10-25cm



Dusky Honeyeater  
*Myzomela obscura*  
12-15cm



Noisy Friarbird  
*Philemon corniculatus*  
15-25cm



Lewin's Honeyeater  
*Meliphaga lewinii*  
15-25cm



Yellow-faced Honeyeater  
*Calegavis chrysops*  
15-23cm



Black-chinned Honeyeater  
*Meliphreptus guards*  
13-24cm



Little Wattlebird  
*Anthochaera chrysoptera*  
23-32cm



Blue-faced Honeyeater  
*Entomyzon cyanotis*  
23-32cm



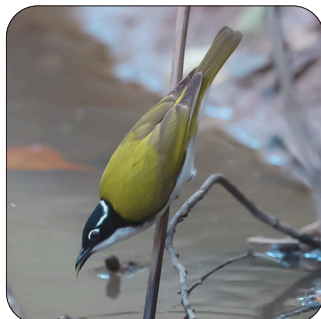
Little Friarbird  
*Philemon citreogularis*  
25-30cm



Scarlet Honeyeater  
*Myzomela sanguinolenta*  
10-15cm



Regent Honeyeater Endangered  
*Anthochaera phrygia*  
20-23cm



White-throated Honeyeater  
*Meliphreptus albugularis*  
13-15cm



Noisy Miner  
*Manorina melanocephala*  
24-32cm



Eastern Spinebill  
*Acanthorhynchus tenuirostris*  
12-18cm

**Food**

Honeyeaters feed on flowers, berries, Nectar: of shrubs and trees, like *Banksia*, *Grevillea*, *Hakea*, *Melaleuca*, and *Correa*. Insects and spiders: Native plants & mulch, such as *Acacia* (Wattle), *Leptospermum*, *Kunzea* and *Tea-tree* attract insects and bugs.

# Honeyeaters



Brown Honeyeater  
*Lichmera indistincta*  
10-15cm



White-cheeked Honeyeater  
*Phylidonyris niger*  
B: nectar availability



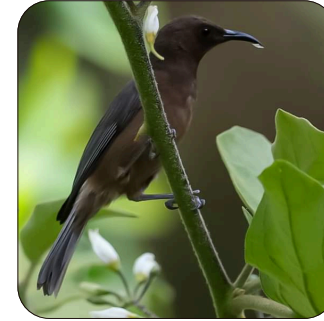
Mangrove Honeyeater  
*Gavicalis fasciogularis*  
15-25cm



Fuscous Honeyeater  
*Ptilotula fusca*  
12-20cm



Yellow-tufted Honeyeater  
*Lichenostomus melanops*  
10-25cm



Dusky Honeyeater  
*Myzomela obscura*  
12-15cm



Noisy Friarbird  
*Philemon corniculatus*  
15-25cm



Lewin's Honeyeater  
*Meliphaga lewinii*  
15-25cm



Yellow-faced Honeyeater  
*Caligavis chrysops*  
15-23cm



Black-chinned Honeyeater  
*Melithreptus gularis*  
13-24cm



Little Wattlebird  
*Anthochaera chrysoptera*  
23-32cm



Blue-faced Honeyeater  
*Entomyzon cyanotis*  
23-32cm



Little Friarbird  
*Philemon citreogularis*  
25-30cm



Scarlet Honeyeater  
*Myzomela sanguinolenta*  
10-15cm



White-throated Honeyeater  
*Melithreptus albogularis*  
13-15cm



Regent Honeyeater Endangered  
*Anthochaera phrygia*  
20-23cm



Noisy Miner  
*Manoriana melanocephala*  
24-32cm



Eastern Spinebill  
*Acanthorhynchus tenuirostris*  
12-18cm

Many Australian plants are pollinated by Honeyeaters, making them essential to backyards and the bush.